



POULTECH
POULTRY FARM SOLUTIONS

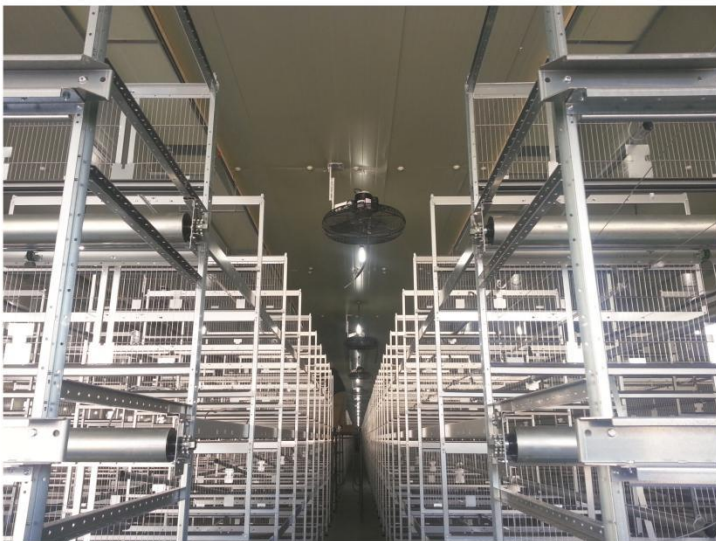


H FRAME BROILER CAGE SYSTEM



CAGE SYSTEM

It is designed that when harvesting the broiler chickens, the floor mesh will be taken out and the chickens dropped down on the manure belt and deliver to the end of the chicken house. the transverse broiler conveyor System will deliver the broilers outside of the chicken house. this system including automatic feeding, drinking system, manure collection system and climate control system in close house. It has been designed for maximum profitability and to reduce the overall production cost.



Hot galvanized wire parts provide a high corrosion protection and a long service life. Spring door can be opened simply and easily the bird area is easily accessible for inspection purpose and quick and easy moving-in. It also has the advantage of smooth surface, good elasticity, high strength, low broken rate etc.

When you harvest the broiler chickens, the floor mesh(drawer dimension is depth 854 * length 708 * thickness 50mm) will be taken out and the chickens dropped down on the manure belt and deliver to the end of the chicken house. the transverse broiler conveyor system will deliver the broilers outside of the chicken house.

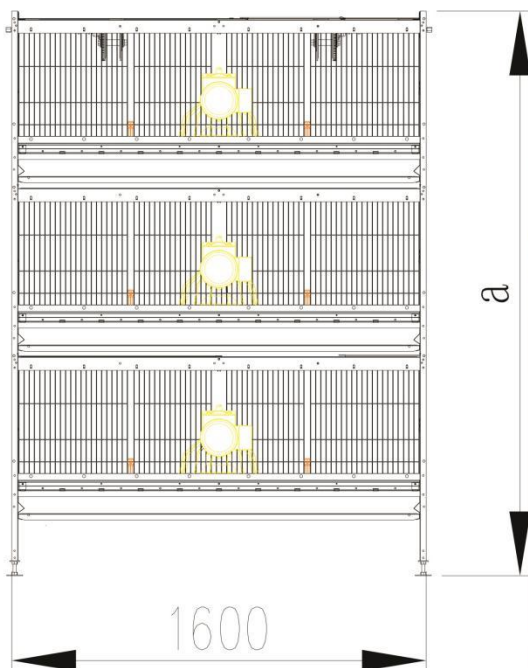
●The push-pull plastic net can be pushed and pulled easily and also can move out of the ready-for-slaughter broilers easily. Its convenient for observing ,grouping or selecting and eliminating chickens. and there have enough position for chicken to gather the food and water, the degree of uniformity and health situation are both better.

●It is the 3 or 4 tiers of this system are most popular. The dimension of each cage cell is 854*708*420mm,and 10 birds in each cell, average 605 sq. cm. can be taken by each bird, this is enough for broiler from day 1 to its harvest. And the farmers can put more or less broilers according the its rearing period.

Inside measurements(mm)	
Length:	2.420
Width:	1.580
Height:	500
Tier Height:	735



Broiler chicken cage type 1600		
(mm)	3 Tiers	4Tiers
a	2.420	3.155
b	2.810	3.545



B



THE SYSTEM ADVANTAGES

More chickens can be reared → compared with floor raising system, the broiler quantity can be increased by 50% ~ 100% in same house, significantly increased utilization of the house surface area, reduced energy consumption.

Manure is isolated from the chicken body completely → reduce the dust greatly, the chance of infection diseases through the feces is less, improve the survival rate of chicken. The exercise of chicken is limited → small energy consumption, save the feed.



HENAN POUL TECH MACHINERY CO.,LTD.

HOTLINE; +86-(0)371-56797621

E-MAIL: poultech@aliyun.com poultrytech@yahoo.com

MOBILE(WhatsApp & Viber): +86 13733845866

Website(English): www.cnpoultech.com

